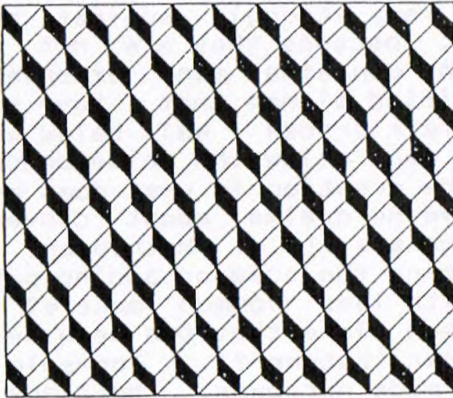
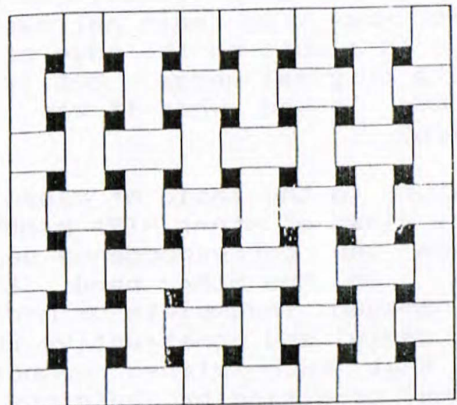


MARBLE TILING

Marble Tiling.—Marble in small slabs, sometimes referred to as marble tiling, is largely used for paving halls and corridors in public and private buildings, and is exceedingly effective and durable. The most usual paving of this description is carried out in squares of alternate black and white marble, laid straight or diagonally, the squares being from 12 to 18 inches in size. This pattern may be associated with a border of broad continuous stripes of alternate black and white marble. When various coloured and figured marbles are used the disposition of the colours requires great judgment, and only those marbles should be associated which are equally durable. Marble tiles should be not less than $\frac{3}{4}$ inch thick for slabs up to 12 inches, and 1 inch thick for those up to 18 inches in size. Marble paving is laid on a concrete bed, floated with Portland cement and bedded in the same material. Parian cement is used for pointing and setting in the case of marbles which would be stained by Portland cement.



Box



Basket Weave

Letters to the Editor

Damaged Moulding Planes and More on Cleaning:
Richard Davidson, Melton Victoria

Still on the topic of planes, I was given a copy of Michael Dunbar's book "Restoring, Tuning and Using Classic Woodworking Tools." I see that he has modified his views on cleaning tools, stating that old tools should not be stripped unless it is absolutely necessary. Unfortunately he is not very convincing on wooden planes, and must be somewhat on the horns of a dilemma since he is a user, rather than a collector, and the book is intended for users. It does raise the question of whether the blackened appearance of very old planes (> 150 yrs) can be considered "original finish" since the most any of them might have had was probably linseed oil or wax.

Dunbar also comes across very strongly against buying damaged or altered tools, because they are not worth anything. My collection contains many examples of damaged, incomplete or modified planes that I have bought at what I consider to be fair prices - well below what I might pay for good planes, and below the value perceived by the general public. The question is what does one do with such planes? I have no qualms about converting those from well known makers (e.g. Mathieson) into something useful by reshaping the sole or adding patches etc, but what do I do with less common makers? For example, I have a John Green plane that has been heavily modified by a previous owner (butcher?). The sole has been altered and the stock made narrower. The blade does not appear to be original, but might be. Another example by Wm Moss, so much narrowed that one of the boxing strips is almost on the edge of the plane. This at least has its original wedge, but is black with age. How would it have looked when it was last in revenue earning service?

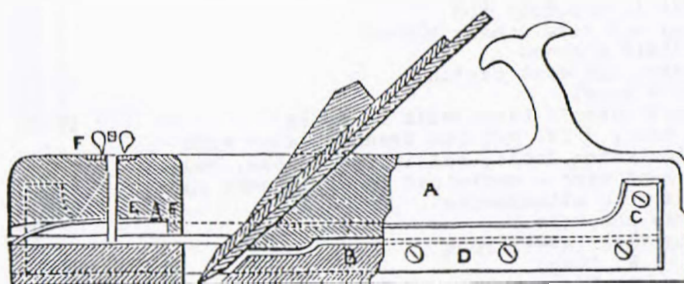
To return to the topic of cleaning, I would be interested in the views of other HTPA members, but I would not like to see the correspondence degenerate into a slanging match. On the other hand, the question of what to do with damaged, incomplete or modified planes could produce some useful and constructive correspondence, bearing in mind that such planes cannot be restored to their original condition by judicious replacement of parts, as metal planes often can be.

Caine Tool Collection - Probate Valuation

A new list of tools donated by Thomas Caine to the National Trust has recently been made available to us by the Trust. The list is absorbing, not only for its contents as a guide to the Caine Tool committee in its task of restoring, cataloguing and displaying the Caine tools, but also for the values given. Perhaps the sixties were a low point for hand tools. Certainly the prices noted for rare Stanley and Norris planes would be ones we would all willingly have paid.

Equally as important as the list which follows is the negative of a section of Caine's workshop which was found in a tin amongst his remaining tools. A photograph is currently being taken from the negative and its emergence is being awaited with great interest.

Nigel Lampert





PROBATE

VALUATION

Made by

LEONARD JOEL PTY. LTD.

Valuers, Auctioneers, Real Estate

17 McKILLOP STREET
MELBOURNE
67 2893. 67 3014
IN THE

ESTATE OF THOMAS S. CAINE.24 Moleworth Street, North Melbourne.

Under instructions
from

THE NATIONAL TRUSTEES EXECUTORS AND AGENCY COMPANY OF AUSTRALIA LIMITED.FRONT - NORTH SIDE

Fine chest - No. 1	2 00
Quantity of coins, medals, tokens	8 00
Gunmetal pocket watch and chain	1 00
Small tray compasses, pens, ivory note book, small tin of stamps etc.	1 00
Lot of books - medical, school etc.	4 00
Five daguerreotypes	7 00
Two mahogany boxes of water colour paints	2 00
Drawing instruments in mahogany box	4 00
Three compasses in mahogany box	1 00
Small mahogany box with sundry pieces	1 00
Pair of old field glasses	1 00
Spencer Browning and Rust sextant	15 00
Telescope - old model	4 00
General cabinet maker's bench with 28 vices	15 00
Bratannia 3 1/4 inch, 3 ft. gap bed treadle lathe with attachments including tools, callipers, chucks, gauges, drills, dual hand vice - contained in six drawer chest and wooden box with attachments	120 00
Box of padlocks and keys	1 00
Box containing small steel rods	8 00
Oil painting by M. King	4 00
Oil painting by W. Taylor	8 00
Four framed prints	1 00
Unframed oil painting and print	2 00
Treadle fret work machine, New American - Old model	10 00
Treadle fret work machine, New American - Old model	10 00
Six inch centre four foot "V" bed with face plate, set of wood turning tools, ten circular saw plates varying 7 inches to 1 1/2" diameter, woodworkers sharpening stones.	100 00
Four wood workers double screw clamps	10 00
Box containing seven steel and brass rules, three pair of scissors, pocket knives, Amp meter, speed indicator, metal, rubber stamps, three steel tape rules, three sets of numeral stamping dyes	12 00

Box containing hand vyce, drill, chuok, three	
pairs dividers, two small hammers, screw extractor,	
tapered soked lathe centres	15 00
Box containing scrapers, lathe tools, oold chisels,	
various rods, boot keys	10 00
Box containing 18 saw sets, mallet, hammers & gauge	25 00
Box containing 5 straight back saws, 3 augers, pocket	
chises and handles	30 00
Wrench & Son mahog.ny ship's stick barometer, thermometer	100 00
Box containing three steel planes, two wood mallets,	
23 chisels, spill plane, hammer, 12 various screw	
drivers, gouging chisel, extension bit holder	40 00
Box containing eleven moulding planes, three planes,	
three jack planes various jigs and templates	20 00
Box containing 18 jack trying jointer or badger planes,	
Beville gauge, 3 mitre saws	30 00
Set of steel shelving	8 00
Plated kero lamp - no shade	10 00
Three Miller kero table lamps	40 00
Four various kero lamps	15 00
Two kero magic lantern slide projectors with four	
boxes of some hundred slides	80 00
Two wooden box saws	3 00
Miller combination steel square	1 00
Spirit level - (2 ft.)	2 00
Six panel saws	25 00
Plated mounted six bottle cruet	10 00
Stanley "55" plane with cutting edges	20 00
Four inch magnifying glass	2 00
Joiners plough with plough irons and outters	3 00
17 various dia stones	5 00
Kunz plane	1 00
Stanley steel shooting plane	3 00
4 Archimedes drills	1 00
Stanley 13 inch 2 3/4 steel shooting plane	8 00
Spirit level	1 00
Panel plane and 3 Archimedes drills	2 00
Combination pocket tool kit	1 00
Wall paper cutter and stencil	1 00
Stanley hand drill	2 00
Paint scrapers, putty knives, line knife & uok pointing	
trowel	8 00
Pole plane and plum bobs	4 00
Ten various hammers	10 00
Stanley woodworkers vyce	2 00
Record router plane	4 00
Coping saw and six chisels	8 00
Four files (Sastard etc.) and Scriber	1 00
14 assorted screw drivers	10 00
8 various braces	14 00
Box of files	1 00
Saw filing clamp and guide	3 00
Picture frame olamps	2 00
Saw vyce	2 00
Assorted clamps (C and saw)	6 00
Two unvils	3 00
Fairfax bench drill	15 00
Wooden mitre shoot	2 00
Electric motor - very old	1 00
Two buys of steel shelves	16 00
Kero hot ari engine with three heating units	10 00
Edwardian walnut mantel olook	8 00
Ship model "Star" in case	25 00
Half model yacht in case	10 00
Model yacht, no case	2 00
Model of ship in bottle	12 00
Vertical steam engine model	15 00
Antique mahogany office olook	12 00
Antique cedar office olook	8 00
Stanley router plane	4 00

White alabaster clock	3 00
White alabaster clock - small	2 00
Hydrometer	4 00
Swing barometer thermometer	12 00
Quantity of aluminium coffee precoolators	15 00
Nine various coffee grinders	18 00
Seven small kero stoves	3 00
Box of 12 callipers - two Vernier callipers	25 00
Cigar box containing assorted brass screws etc.	1 00
Miniature chest containing watchmaker's reamers, drills etc.	2 00
Box of dentist drills, 5 mandrels etc.	1 00
Cigar box, watchmakers tapered reamers	1 00
Four boxes of watch parts	2 00
Set of gold scales in box	4 00
Watch makers lathe pulley counter shaft	8 00
Two jeweller's blow pipes	1 00
Fourteen various oil cans	4 00
Two blow lamps	3 00
Amp meter, electric magnet	1 00
Set of stock and dies with taps $\frac{1}{8}$ to $\frac{1}{2}$ inch	8 00
Case of six button dies and stocks with taps	8 00
Case of 16 button dies with taps	10 00
Case of 6 button dies with taps	8 00
Case of 4 stocks and dies $\frac{1}{16}$ to $\frac{1}{2}$ inch	8 00
Case of watchmaker's screw plates with taps	8 00
Set of fine gas thread taps $\frac{1}{8}$ to $\frac{3}{8}$ and 5 piece combination taper and plug	10 00
Four sets of screw plate dies with steel wire gauge	12 00
Set of stock and dies with taps, two tap holders, one die holder $\frac{1}{8}$ to $\frac{1}{2}$ - Whitworth threads	35 00
Two sets gas, 6 threads of stocks	8 00
Box assorted files	2 00
Three punches, three small holders	1 00
Quantity of files and small anvil	3 00
Whitworth threads, taper and plug stock and dies with angle holder	25 00
Whitworth threads, taper and plug stock and dies with right angle holder	20 00
High speed indicator	12 00
Three small boxes, Whitworth machine, screws and nuts	4 00
Torrer screw extractor	1 00
Four bow operated drills with 4 bows	15 00
Three spiral ratchet screw drivers	18 00
Tin containing 60 approximately Morse twist drills up to $\frac{1}{2}$ inch	8 00
Set of routing cutters, approximately 50	20 00
Four folding rulers and steel tape	4 00
Eight pocket steel tapers	1 00
Two steel combination Sargent angle out squares	8 00
Two hand drills	3 00
Ten various plyers	8 00
Six various hammers	6 00
Small vyce	5 00
Angle jaw vyce	2 00
Bench - hand wheel pulley drive	3 00
Various steel tri square (10)	6 00
Seven various hatchets	10 00
Various knives	1 00
Baker bench and breast drill	3 00
19 chisels - Cold & Star etc.	18 00
Three pairs of wire cutters	4 00
Two pairs of tin snips	1 00
Drill holder, 5 small pinch bars	2 00
Sixteen various spanners	8 00
Eight various shifting spanners	20 00
Set of eight box spanners with handle	3 00
Set of eight box spanners with handle	4 00

Seventeen various hammers - panel beaters,	10 00
carpenters and engineers	
Two Japanese case openers	1 00
Small pair of steps	2 00
Foot air pump	1 00
Hack saw and blades	1 00
Large "Ideal" spirit level	3 00
Three wooden "T" squares	4 00
Sash clamp	2 00

FRONT SOUTH SIDE ROOM

Modern Colonial style rocker	15 00
Camp stretcher, kero heater, pine stand, folding	
card table, wooden bench, two folding stools	2 00
Case of pair of single barrel and double barrel shot	
guns, perouseon cap, muzzle loading complete with	
shot flask, powder flask, ram rods and cleaning rods	
etc. by Joseph Bourne & John Morton	120 00
Half model yacht in case	30 00
Two police waddies	1 00

BACK NORTH SIDE ROOM

Set of shelving	8 00
Quantity of books including History of Ballarat,	
Murray View, Boys own Annual	110 00
Five small various Swiss cuckoo clocks	5 00
Wheel turning stand	10 00
Four cedar Tri squares	4 00
Six glass etched tumblers	1 00
Victorian cedar mantel clock	15 00
Cedar mantel clock	8 00
Small tin trunk containing personal papers	2 00
Tuner (shooting ends of mitres)	3 00
Miniature mahogany Wellington chest of nine drawers	
containing bicycle parts, King Blok spanners etc.	40 00
Box containing bicycle lamps, tool bags etc.	4 00
Box containing bicycle fittings, lamps, pumps etc.	4 00
Miniature stationery steam engine child's train set	3 00
Model steam boat	2 00
Copper kettle	4 00
Wall coffee grinder	2 00
Quantity of tinmith's tools including anvils, snips,	
hammers, stacks, benders, folding machine	20 00
Box of brass gas fittings	3 00
Box of sundry string	1 00
Three Duplex stock and dies - pipe treading dies	90 00
Quantity of plumber's tools including pipe cutters,	
various wrenches, pipe vices, stilsons	30 00
Ratchet stock and dies	8 00
Whitworth stock and dies $\frac{1}{2}$ - $\frac{3}{4}$	12 00
S.A.S. stock and dies $\frac{1}{2}$ - $\frac{3}{4}$	15 00
Wentworth stock and dies $\frac{1}{2}$ - $\frac{3}{4}$, with guide sockets	10 00
Carpenters tool chest containing squares, saws,	
jack planes, gauges, rabbit plane etc.	30 00
Carpenters tool chest containing two Morris planes,	
Mortice gauge, two spirit levels etc.	60 00
Steel box containing 14 various screw drivers	16 00
Steel box containing 4 planes and clamps etc.	20 00
Wooden box containing 2 shooting planes, 2 jack planes etc.	18 00
Wooden box containing Morris plane, Mortice gauges,	
chisels, squares, dove tail template, spirit level	35 00
Wooden box containing two stanley planes, spirit level,	
two wooden jack planes and mitre gauges	50 00
Small tin trunk	1 00
Watchmaker's bench (old model), vice, 2 lathes with	
counter shafts, treadle drive - two drawers containing	
tools	50 00
Miniature chest of eight drawers containing clock parts	5 00
Box of sail makers tools, "Jaques" table billiard fittings	7 00